

Custom Covers For Any Vehicle!



Outdoor vs. Indoor?

Start by determining if you will use your cover outside or inside. Outdoor car cover materials offer the best protection against elements like tree sap, rain, salt air and bird droppings, that are damaging to your paint job. On the other hand, indoor car covers protect against dust, dings and scratches and are less bulky. Whether it's indoor or outdoor protection that you need, our covers also guard your interior from sun damage and prying eyes.

Choose Your Material...

All of our materials offer excellent breathability. No material can be completely moisture-resistant and even a small amount of morning dew trapped between the cover and your finish can cause damage. Our fabrics allow moisture to vaporize and escape, keeping the surface clean and dry. For specific information on materials, see the ratings in the car cover comparison chart.

Custom Fit...

These covers are individually made to custom fit your Vehicle's year, make and model. Too loose a fit and the cover may billow in the wind – flapping up against your finish – doing damage with each snap and possibly even blowing off altogether! Durable grommets are standard with all our covers for use with our cable and lock (sold separately). Our covers are designed for lightweight ease of use.



Demand A Custom Fit

- Offers Complete Protection
- FITS Like A Tailored Suit - Not Like A Sack!
- Won't Flap Around When The Wind Kicks Up
- UNLIKE Semi-Custom Or Generic Car Covers, NO Tight Areas That Rub Against Paint

Our Car Covers Use 30% More Material...

- We Eliminate Seams For A Cleaner Look
- Less Chance For Water Leakage
- Less Chance Of Seam Failure & Tearing
- Double Seam OverStitching For Strength



CAR COVER COMPARISON CHART

	BREATHABILITY	SUN PROTECTION	POLLUTANTS	MOISTURE	DUST	DING PROTECTION	BULK	DURABILITY	CUSTOM FIT	WARRANTY FROM	
STORMPROOF™	A	A	A	A	C	A	A	A	A	3 YR	249.99 ea.
SATIN STRETCH™	A	C	C	C	B	B	A	C	A	1 YR	199.99 ea.
TRIGUARD™	A	A	A	A	A	C	A	B	A	1 YR	99.99 ea.
SILVER GUARD PLUS™	A	A	B	B	B	A	B	C	A	1 YR	159.99 ea.

Indoor Covers

Satin Stretch™

- Blind Stitching For Hidden Seams
- Great For Autoshows & Car Displays

Satin Stretch is an indoor custom car coverfabric. It will fade if exposed to extended sun periods and is not water-resistant. But Satin Stretch is the softest fabric available and has Lycra® yarns to hug every contour of you automobile. Blind stitching results in invisible seams. This is a "sexy" car cover...a must for those displaying their vehicle at auto shows. Available in grey, black or red. Specify: year, make, model and color.

802890 Satin Stretch™ Cover (Auto) 199.99 ea.

802894 Satin Stretch™ Cover (SUV) 259.99 ea.



To Order Call 1-800-243-1220

Outdoor Covers

Good



Triguard™ Car Covers

• **Light Weather** • **Great As A Dust Cover**
A 3 layer Custom Car Cover material suited for light weather conditions (perfect for occasional use or vehicles stored under a carport).

Triguard is fairly soft and very compact. Do not use Triguard in harsh weather or sun. Triguard is also not suited in areas with industrial fall-out (acid rain). Available in grey only.

Specify: year, make and model.

802111	Triguard™ Cover (Auto)	99.99 ea.
802115	Triguard™ Cover (SUV)	129.99 ea.



Better



Silver Guard™ Plus

• **Medium To Heavy Weather**
• **Won't Rot, Mildew, Or Stretch**
• **Breathable Cover Dries Quickly**

This 300 denier polyester fabric is UV-resistant against sun damage and nearly 100% waterproof. It breathes to release moisture, is gentle on your paint and compact for easy storage. Machine washable. Available in grey only. Specify: year, make and model.

883590	Silver Guard™ Cover (Auto)	229.99 ea.
883591	Silver Guard™ Cover (SUV)	199.99 ea.



Best



Stormproof™

• **Heavy Weather** • **State-Of-The-Art Fabric Design**
• **Lightweight** • **The Feel Of An Expensive Golf Jacket**
• **BEST Protection**
• **Won't Rot, Mildew, Break Or Stretch**

Stormproof is UNCOATED and UNTREATED. This means that even after months or years of use, it will have the same properties!, Stormproof is tested to be the MOST WATER-RESISTANT and (because there are no coatings) the MOST BREATHABLE car cover in the world. You can't go wrong with Stormproof. Available in grey, red or black. Specify: year, make, model and color.

802889	Stormproof™ Cover (Auto)	249.99 ea.
802893	Stormproof™ Cover (SUV)	299.99 ea.



Lock It

Hang onto your new cover. A non-scratching plastic-coated cable slides through special grommets on the cover and a

brass lock keeps everything secure. Comes with 3 keys.

802126 Lock It, Car Cover Lock System

9.99 ea.



Storage Bag

Handy polycotton bag will hold any cover and stow easily in your trunk.

802125 Storage Bag

7.99 ea.



Car Duster

Specially-treated duster won't scratch paint, yet frequent use will remove dust and dirt without water. Keeps your car and cover clean.

88-0256-2 Car Duster

19.99 ea.

Car Covers / Protection

Intro-Guard™ Car Covers For Later Model Mercedes®

- Soft & Non-Abrasive, Water-Resistant And Breathable
- Woven Polyester Material With Aluminized Polyurethane/ Acrylic Finish
- Fast Turnaround, Most Shipped Within 48-72 Hours Of Factory Receipt Of Order
- Features All Weather Lock™ Strapping System To Keep Cover Snug
- Exclusive Lifetime Warranty & Includes Cable Lock Kit & Storage Bag
- Custom Made To Year, Make & Model With Mirror And Hood Star Pockets



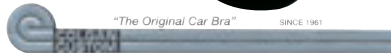
MS-1367 Mercedes® Car Cover 149.99 to 179.99 ea.
 MS-1367 Mercedes® SUV Cover (ML, R & G Class) 149.99 to 179.99 ea.



Mercedes Benz® Genuine Car Covers

We now feature Mercedes Benz® original car covers made from Noah, a revolutionary UV-resistant, 3 layer fabric that "breathes". Tailored to fit your vehicle exactly, this durable cover will help protect your car's finish from the elements and help keep its surface cleaner and cooler. Storage bag included.

MS-1366 Noah Car Cover 213.99 to 349.99 ea.
 99-1122 & 99-1145 See Web Site For Applications



MS-1366



The Best-Fitting Bra In The World, By Colgan Custom

Bras have been Colgan's only product since 1961. The very finest materials and workmanship insure a super-tight fit, to help protect the paint. Some models use a two-piece design to allow the closest possible fit. Double-padded in critical areas to assure against wear. Rubber-coated hooks on high energy elastic straps and built-in air deflectors stabilize the cover at high speed. Colgan uses 25oz 100% virgin vinyl milled exclusively for Colgan. All edges and openings are felt-bound, to provide optimal protection and that finished look. Plus, Colgan's 5 year limited warranty is your guarantee of quality and lasting value. Many states require a front license plate, so please specify if you want with or without front license plate cutout. Note: Bras without a license plate cutout are special order and non-returnable.

MS-1184 Custom Fit Colgan Bras 99.99 To 189.99 ea.

1963-2002 "Top Down Style" Interior Cover



If you don't have time to raise the top or use your car cover, this is the answer. Protect your interior from heat build-up, cracking, leather fading and prevent theft. Available in gray only, for all '63-'02 SL's.

99-733	1973-1980	450SL	79.99 ea.
99-733	1981-1985	380SL	79.99 ea.
99-733	1986-1989	560SL	79.99 ea.
99-019	1990-2002	129 Chassis	79.99 ea.
99-751	1963-1967	230SL	89.99 ea.
99-751	1967-1968	250SL	89.99 ea.
99-751	1968-1971	280SL	89.99 ea.

Performance Car Capsule

- Fan And Filter
Provides Air Flow
- Protects From Kids,
Pets, Dings, And Rust
- Fan Tested For 5-Tears
Continuous Running
- A Virtual Time
Capsule For Your Car

Did you ever wish you could seal your perfectly polished and detailed car into its own protective bubble, keeping it safe

from dings condensation and all the environmental gremlins that slowly turn it from new to old. Well, now you can, with the ingenious Car Capsule. You just drive your car onto the laminated fabric basemat, then zip the durable, clear 8 mil PVC bubble over the top. A built-in fan and filter provides a continuous flow of dry, filtered air while your car rests inside, preventing rust from condensation; it costs only \$1.50 a month in operating expenses to keep you car in concours condition as long as you want.



	Length	Width	Height	
88-0201	14'	68"	68"	349.99 ea.
88-0202	16'	72"	68"	359.99 ea.

	Length	Width	Height	
88-0203	18'	76"	68"	379.99 ea.
88-0204	20'	78"	68"	399.99 ea.



Sunroof Wind Deflector

Our sunroof wind deflector enables you to get more use out of your sunroof. It reduces wind noise and drafts, keeping you more comfortable as you drive. Easy to install accessory. Hardware and instructions are included.

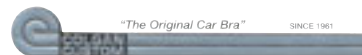
MS-1424 Sunroof Deflector 79.99 To 84.99 ea.

Colgan Mirror Bras

Guards against bugs, road debris and rock chips. Custom tailoring and specially-fabricated vinyl ensure a precise fit. Same quality and attention to detail as the world-famous Colgan hood bra.

Available for most late model Mercedes Benz®. The perfect compliment to the Colgan hood bra. Sold in pairs only.

MS-1183 Colgan Mirror Bra 59.99 to 69.99 pr.



Performance Products Custom Sun Shade

Performance Products Custom Sun Shades are precisely crafted to fit the windshields of you Mercedes®, helping to reduce interior temperature from damaging sun rays that penetrate the front windshield. The outside surface of the heat shield is silver reflective fabric and the side that goes towards the inside of the car is finished in soft felt.

P801649 39.99 ea.

Visit the website to specify the exact year/model/style you need.



UVS 100 Heat Shield

- Custom Fit For Your Porsche® Or Other Car
- Free Storage Bag Included!
- We Carry All Custom Patterns For Every Car Under The Sun!
- Folds For Easy Storage. • Specify Year, Model

This is, without a doubt, the most finely engineered heat shield available today. The upper side is highly reflective silver material. The underside is soft pellow felt. Both are laminated to a foam core board, which helps insulate the interior. Best of all, each shield is custom-fitted.

99-1010 79.99 ea.

99-527 79.99 ea.



Valve Spring Compressor Sets

Valve Spring Compressor Tools are needed for removal and replacement of valve springs and rocker arms. Using these tools will allow you to do these procedures with the cylinder head on or off the engine. For 102, 102 16 Valve and 103 Engines. 58-028C shown.

- 58-028A** '86-'87 190E2.3 16V **289.99 set**
58-028B '84-'93 190E2.3, No 16V **311.99 set**
58-028C '87-'93 190E2.6
 '87-'92 260E/300E2.6
 '86-'92 300E/300TE Inc. 4Matic
 '88-'89 300CE, '88-'91 300SE/300SEL
319.99 set

Valve Spring Compressor

Needed for R&R of valve spring or rocker arm. Job can be done with the cylinder head on or off of the engine. This tool will work with any Mercedes-Benz® 4, 6, V-8's with a single camshaft per head, except 102, 103, 119 eng. A necessary tool for a cylinder head repair!

- 58-061** **189.99 ea.**

Prechamber Puller

For pulling prechamber out of cylinder head. For 601, 602, 603, 606, 615, 616, 617 engines.

- 58-012** Puller **169.99 ea.**

Lug Bolt Wrench

Factory replacement 17mm lug bolt wrench.

- 58-048** Lug Wrench **17.99 ea.**

Chain Press Tool

This 2-step tool will press and crimp double row timing and oil pump chains. Fits 116, 123, 126 chassis.

- 58-016** Double Row **199.99 ea.**

Timing-Test Light

You cant troubleshoot an electrical problem without a proper test light. This Genuine Hella light works on 6-volt, 12-volt and 24-volt (aircraft) systems, and comes in its own convenient carrying pouch.

- 802512** 6/24V **9.99 ea.**



Head Bolt Socket

Designed for removal of cylinder head bolts. 1/2" drive.

- 58-026** Fits 601 Diesel Engine **27.99 ea.**
58-015 Fits 617 Diesel, 102 Gas Engine **38.99 ea.**



Tool Kit

This is the perfect emergency tool set, for those times when having the right tool can mean the difference between driving and walking. It has a full range of 1/4 inch and 3/8 inch metric and SAE sockets, open/box end wrenches, wire stripper/crimper, magnetic screwdriver, and even a circuit tester.

- 88-0328-1** Tool Kit **59.99 kit**



Coil Spring Compressor

Any type of suspension work that involves removing a component will almost always require compressing one or more suspension springs. For 107, 116, 123, 124, 126, 129, 201, 202, 210, 140 chassis.

- 58-018** Spring Compressor **549.99 ea.**

Oil Filter Socket

Removes oil filter 18-007 for 2.6 and 3.0 engine, oil filter cap for oil filter 18-073 2.8 and 3.2 engines.

- 58-009** Oil Filter Socket **31.99 ea.**

Oil Drain Valve

Drain engine oil without tools or mess. Replaces oil drain bolt. Brass & stainless steel construction. Fits most Mercedes models 1986-2005. See website for more info & applications.

- 18-133** **25.99 ea.**

Spline Socket

For removal of delivery valve holder on top of diesel injection pump. For all diesel engines listed in this catalog.

- 58-038** Spline Socket **49.99 ea.**

Ball Joint Press Tool

Necessary for pressing lower ball joint into the steering knuckle. Fits 116, 123, 126 chassis.

- 58-020** Press Tool **366.99 ea.**

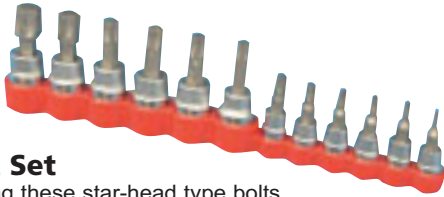
Many of the tools manufactured for Performance Products® are supplied by Sir Tools. Sir Tools has been in business over 10 years supplying us with 100% European-made quality repair tools. Look for this Sir Tools icon.

Standard Torx® Socket Set

Mercedes® is using these star-head type bolts and screws for a number of attachment points on their cars. These Torx®-style fasteners are often confused with Allen bolts — right up until the moment the Allen wrench slips and the fastener is trashed. These high-quality genuine Torx® Socket Sets will allow you to do the job right. Vinyl socket holder included. This set has the following: 1/4" drive torx bits T-10, 15, 20, 25, 27, 30. In addition it has these 3/8" drive torx bits: T-40, 45, 47, 50, 55, 60.

88-0151-1 12 PC

25.99 set



Metric Converter

Use a sliding rule to automatically convert English measurements to Metric equivalents.

861134 Conversion Table

4.99 ea.



Metric Feeler Gauge

15 blades. .06MM (.003") to .70MM (.028"). With thumb screw to hold any position.

802042 9.99 ea.



Competition Tire Gauge

- Use The Tire Gauge The Pros Use!
- Calibrated 0-60 PSI
- Swivel Head Fitting
- Pressure Hold And Quick Bleed For Quick Pressure Setting

This deluxe model has a hose fitting and features a quick bleed valve for quick pressure setting, 0-60 PSI.

88-0181-1

19.99 ea.

RoadMaster® Quality That Works® For Mechanics

Synthetic leather palm for durability with flexible, spandex back. Great fit provides maximum dexterity, while protecting hands from cuts, abrasions and burns. Adjustable hook and loop closure for comfortable fit, reinforced fingertips for longer wear. Colors vary. Sizes M-XL.

P883617 Medium

14.99 pr.

P883618 Large

14.99 pr.

P883619 X-Large

14.99 pr.



The Perfect Work Glove - Our New Roc® Collection Has A Glove For Every Task

Special coatings provide unmatched grip in wet or oily jobs and tough abrasion resistance; comfortable form-fitting shells allow extra dexterity for working with small parts. So perfect...you'll feel as if you're working with your bare hands.



Nitrile Coated Palm

Durable nitrile palm coating provides great oil grip and increased abrasion and puncture resistance. Seamless nylon shell for extra comfort and extended wear; knit wrist keeps dirt out. Not liquid proof. Machine washable. Men's sizes M-XL.

P883608 Medium 4.99 pr.

P883609 Large 4.99 pr.

P883610 X-Large 4.99 pr.

Polyurethane Coated Palm

Durable polyurethane palm coating provides unmatched grip. Ideal for jobs requiring maximum dexterity, without the fatigue associated with heavier, bulkier gloves. Seamless nylon shell for extra comfort and extended wear; knit wrist keeps dirt out. Not liquid proof. Machine washable. Men's sizes M-XL.

P883611 Medium 6.99 pr.

P883612 Large 6.99 pr.

P883613 X-Large 6.99 pr.



Kevlar® Shell

Kevlar® fiber is five times stronger than steel, and offers exceptional cut resistance. Comfortable Kevlar®/Lycra® shell and durable nitrile palm coating provide a unique combination of cut, abrasion and puncture resistance, without sacrificing dexterity and grip. Seamless comfort for extended wear; knit wrist keeps dirt out. Not liquid proof. Machine washable. Men's sizes M-XL.

P883614 Medium

14.99 pr.

P883615 Large

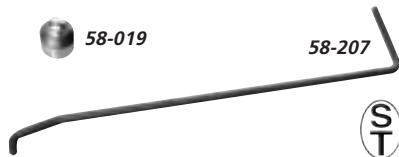
14.99 pr.

P883616 X-Large

14.99 pr.

58-019

58-207



Serpentine Belt Tools

Removal of fan and clutch is necessary for the one piece serpentine belt replacement. Holding tool (A) keeps clutch from rotating and the socket (B) allows for access to the allen bolt in front of clutch.

58-207	Holding Tool (103 Engines Only)	19.99 ea.
58-019	Allen Socket Fits 103, 602, 603 Engine	9.99 ea.



Serpentine Belt Installer Tool

This time-saving tool gives the technician the control and reach when installing serpentine belts in all applications. The tool was also designed to help install V-belts and timing belts that tend to be placed in areas that are difficult to reach. The two pin design gives the technician convenient belt push/pull capability and the handle gives the technician the twisting control to install belts in difficult areas.

883058 12.99 ea.



Injector Line Wrench

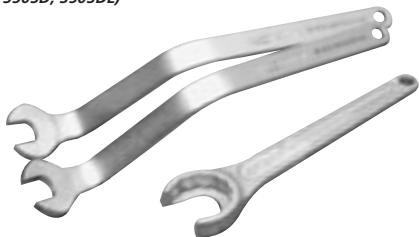
Removes metal diesel lines from injection pump. 58-014 shown

58-014 Wrench 61.99 ea.

For 615, 616, 617 Engines. (240D, 300D, 300SD)

58-047 Wrench 44.99 ea.

For 601, 602, 603 Engines. (300SDL, 350SD, 350SDL)



Valve Adjustment Wrenches

Diesel engine valve adjusting wrench set. An important part of your diesel maintenance. Valves should be checked and adjusted if necessary every 15,000 miles. For 616, 617 engines.

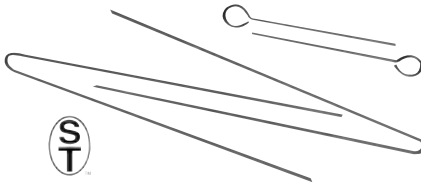
58-006 Wrench Set 101.99 set

Ignition Lock Cover Remover



The rubberized interior of this tool allows easy turning of the outer lock cover. Fits all 124, 126, and 201 models.

58-046 39.99 ea.



Ignition Lock Wire Release

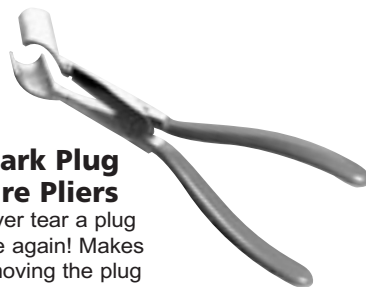
To remove the ignition lock, one or more of these release wires are necessary. Fits 124, 126, and 201 models.

58-045 21.99 ea.

Panel Removal Kit

When removing door panels, dashboards, or other interior panels prevent tears by using the tools professionals use. These tools are made from impact-resistant nylon plastic, to help prevent scratches on your expensive interior panels.

883479 5 Piece Kit 21.99 set



Spark Plug Wire Pliers

Never tear a plug wire again! Makes removing the plug wire simple.

58-039 Plug Wire Pliers 41.99 ea.

Injector Socket

Diesel injector socket for removing injector from prechamber on 616, 617, 601, 602, 603 engines. May also be used for crankshaft pulley bolt on 102, 103, 116, 117, 601, 602, 616, 617 engines.

58-008 Injector Socket 35.99 ea.



Tie Rod End Remover

Make short work of a difficult task with this heavy-duty tool. Heat-treated yoke with hardened center screw. Works on all Mercedes® with Pitman arm-type tie rod ends, without tearing the ball joint boots.

910673 69.99 ea.

Hassle-Free Oxygen Sensor Removal

Specially designed to make oxygen sensor removal quick and easy. Just as important, the socket fits around the sensor, without you having to cut critical oxygen sensor wires. 22mm, 3/8" drive.

909940 29.99 ea.



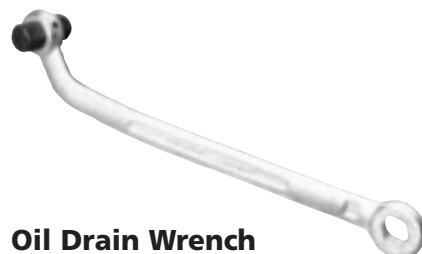
Glow Plug Reamer

For cleaning prechamber opening before installing glow plugs 616, 617 engine.

58-052 To '79 Loop Type 177.99 ea.

58-056 From '80 Pin Type
(For 601, 602, 603, 616, 617 Engines.)

54.99 ea.



Oil Drain Wrench

14mm Allen will allow removal of drain plug in all rear differential and manual transmissions. The 13mm box end can be used to remove engine oil drain plug.

58-043 Oil Drain Wrench 41.99 ea.

Torque Wrench

Easy-to-use click type torque wrench can be set to read in both pounds and metric measurements. Durable all-steel construction with a knurled non-slip grip. Guaranteed for one full year. A must for every home mechanic. 1/2" drive.

88-0155-2 Torque Wrench

44.99 ea.

CIS Adjusting Tool

Make easy work of adjusting the air-fuel-mixture on Bosch CIS fuel injection units.

883348

8.99 ea.

Rear Axle Spline Socket

Necessary for the replacement of rear axle bearings. Use to remove and install bearing nut Fits 107, 116, 123, 126 Chassis.

58-207 Spline Socket

62.99 ea.

Handy Co-Pilot Light

This halogen lamp on an 8-inch flexible arm allows you to easily read road maps, find lost articles, or locate objects in the glove box. Simply plug it into your cigarette lighter and adjust the intensity to meet your needs. Comes with bulb.

883209

29.99 ea.

80 LED Cordless Worklight

- Super Bright White 80 LED's
- Rechargeable & Cordless • Cool-To-The-Touch

This Slim 80 LED Cordless work light is designed to fit in confined engine compartments and other hard-to-reach places. Long life LED rated up to 80,000 hours; cool-to-the touch and because LED bulbs do not get hot, they reduce the possibility of a burn or fire. A comfortable non-slip grip handle, a shatter-proof and shock-proof housing and a light shield makes it easier to use for those long nights in the garage. Has a rechargeable 9.6V 950Ahm NimH battery that can be charged for use up to 5 hours of work and has LED charging indicator. The Worklight is supplied with CE/UL approved adapter.

88-0103-2

59.99 ea.

Test Your Own CIS Injectors

You can do it all with this CIS tester. Works on all Continuous Injection System (CIS) units on late-model European cars. Complete with all adapters and hook-ups.

910450 CIS Tester

239.99 ea.



Speed Timer

- Speed Timer Displays Lap Speed In Mph/Kph
- 30 Dual Memory Of Speed, Lap Time & Number
- Automatic Lap Counter To 999.
- Distance Entry Precise To 1/1000 Mi/Km
- Fastest & Average Lap Times, On-Demand
- Three Chronograph Options - Lap, Split Or Dual Split Timing Modes
- 1/100 Second Precision To 24 Hours
- Time Of Day, Alarm, Calendar
- Shows Current Lap & Split Running Times

883523

39.99 ea.



Radio Removal Tool Kit

This 6-pack wallet-style radio removal kit is not your average set of keys. This kit is specially pre-assembled and designed to remove all "anti-theft" radios from its mounting bracket. These anti-theft radios are found on late model to present Porsche®, Mercedes®, BMW®, Audi®, VW® and Ford® models. No other radio removal tool kit is available with so much application range. Each piece is carefully contoured or dipped with a rubber coating for your fingers.

805755

39.99 kit



Sub Frame Bushing Tool

Bushing tool needed for R&R of differential sub-frame bushings. This is the most effective tool on the market. Each driver nut has its' own thrust bearing which eases the pressing and pulling action. Fits 124, 129, 140, 201 chassis.

58-076

124.99 ea.



Worx Disposable Gloves

100% latex free Nitrile synthetic glove excellent comfort and dexterity. Provides great resistance to a wide variety of solvents and chemicals in the professional workplace. Enhanced durability for grease and petroleum based products. Great puncture & tensile strength.

830003 Medium Size

9.95 ea.



Solid Brass Wheel Bolt Alignment Tool

- Scratch-Resistant Solid Brass
- Ease Of Wheel Installation
- Fits Any 14MM Lug Bolt Hole For Perfect Lug Bolt Alignment

You don't have to use three hands and two feet anymore. Just hang the wheel on this holder and easily bolt your wheel to the hub. This tool will work on any 14MM lug bolt hole. Such as the Boxster®, 996, 997, Cayman™, 914-4 and the early 924 with 4 bolt pattern and 356 A and B models. This incredible tool is made from solid polished brass to resist scratching your wheel. A must for any mechanic or shop.

883389 14MM Wheel Alignment Tool

24.99 ea.



Don't Get Stranded With A Cheap Inflator!

- 260 PSI

We've tested lots of air compressors, and this is the fastest, most durable we've found for Porsches®. Lightweight and protected in a heavy-duty case, it has a pressure gauge, convenient 11-foot cord, and an on-off switch. Standard 260 p.s.i. model for emergency road service.

88-0163-2 Standard Tire Inflator

29.99 ea.



Tire Pressure Monitoring System

- Safety At The Push Of A Button
- Fully Automatic Tire Pressure Control

Check your only connection to the road completely and at any time!

Designed and manufactured by Original Equipment Supplier Hella. Correct tire pressure avoids unnecessary fuel consumption, tire wear, dangerous aquaplaning and inadequate traction. The necessary checking takes time and effort. Without permanent monitoring, uncertainty when driving is an irritating feeling. Hella now offers a fully-active, radio-controlled system for permanent checking of tire pressure and temperature. Further technical information found unique to the Hella TPMS is the adjustable background color of the display. The look of the display can thus be matched to the vehicle-specific instrument lighting. For installation of the control system, the sensor valves must be fitted to all four wheels. The ideal time to take the first step into controlled safety is the next time you change tires.

883519 Hella TPMS

269.99 kit



Gorilla Power Wrench

- Remove Tightest Lug Nuts Easily

Gorilla's telescopic handle extends to 22", providing the leverage needed for removing even the tightest lug nut. Solid steel and built to last, it comes with 2 dual sockets that fit virtually all applications.

88-0156-2

24.99 ea.



Brushnut™ Lug Nut Brush

Made of space-age, polymer bristles, the tips are "feathered" to eliminate scratches. The brushes are handcrafted using precision CNC controlled machines in the Silicon Valley. These are not gimmicks. These brushes are well thought out, precision tools that are made to last. They reach deep into wheel openings and scrub both the opening and the lug nut. They can also be used to clean narrow wheel slots and around tire stems. They are absolutely guaranteed not to scratch any polished wheel. The Lugnut Brush is available with a comfortable, ergonomic, handle for hand use or with a 3/8 inch, tri-lobed, shaft for use with any cordless drill.

883718 Hand Held

17.99 ea.

883717 Drill Insert

15.99 ea.



Digital Infrared Thermometers

The MicroTemp line of infrared thermometers (pyrometers) allow you to measure the temper-

ature of any surface helping with mechanical diagnostics such as detecting a clogged catalytic converter, misfiring spark plug, weak heating, cooling and air conditioning systems, or even monitoring tire and track temperatures. Professional MotorSports mechanics rely on MicroTemp pyrometers in the pits, but they are also ideal for the automotive do-it-yourselfer.

The MT-250 is the newest and smallest 5:1 IRT in the world!! New functions include a stop-watch, clock and room temperature. Temp range: -67°F to 482°F

883681 Model MT-250 43.99 ea.



The ultra compact MT-100 model is about the size of your "pinky" finger and can easily be attached to your key chain. Temp range: -27° F to 230° F (-55° C to 110° C)

883522 Model MT-100 26.99 ea.



Maxsa™ Garage Laser Park

- Perfect Parking Every Time
- No More Garage Mishaps
- Installs In Minutes

Take the guesswork out of garage parking with the Maxsa™ Garage Laser Park. The unit automatically activates every time your vehicle enters the garage; just guide your vehicle into the ultra-bright laser beam and park in exactly the same spot time after time.

88-0138-2 25.99 ea.



Stick-On Parking Ding Protection

Here is a simple solution to save your paint and bodywork from careless drivers. When you leave your car unattended in a public parking lot, simply stick the suction cups on your door and walk away with confidence.

88-0137-2 Suction Ding Protection 15.99 ea.



Parking Guard Mat

- Don't Use Your Front Bumper To Find The Wall

Simply position this heavy (3.5 lbs.) rubber mat exactly where you would like your front wheels to stop. Prevents the overhead garage door from hitting rear of car, also stops damage to items stored in front of your car.

88-0134-2 21.99 ea.



Flat Stoppers™

It's a fact: cars that sit for months on end in one place will develop flat spots on the tires. You can prevent tire flat spotting with Flat Stoppers™.

Flat Stoppers™ go underneath your tires to insulate them from temperature extremes and the special lightweight polystyrene construction eliminates uneven pressure points regardless of how long your car sits. Use Flat Stoppers to put an end to ruining expensive tires.

88-0122 Set Of 4 269.99 set

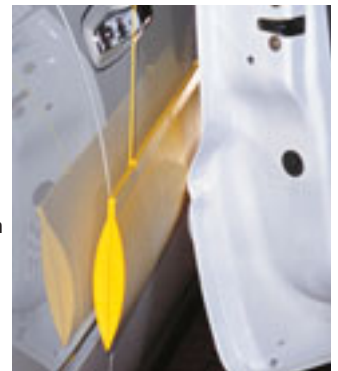


Hanging Door Ding Protection

If you live in a condo or park in a tight private lot, you can prevent damage by hanging this convenient rubber barrier between your car and your neighbor. When someone carelessly opens the door with their hands full, this rubber protector prevents dings and damage.

Hanging Ding Protection

88-0136-2 22.99 ea.



Rubber Door & Wall Saver

This will give you over two feet of protection for your door's paint, and your wall. Soft rubber, easily attaches (hardware included) to most walls. Can also be wrapped around pillars or posts between cars. Its all

too easy to open your door a little too fast and chip the paint.

88-0135-2 13.99 ea.





Hydraulic Suspension Fluid

- OE Febi Bilstein Suspension Fluid
- One Liter Bottle

Three and one-half liters are necessary for complete flush. One liter bottle.

99-083 9.99 ea.

Water Wetter

- Reduces Coolant Temperatures
- A Must For Cooling Systems

Water Wetter is a unique wetting agent for cooling systems which reduces coolant temperatures by as much as 20 degrees Fahrenheit. Water Wetter can be added to new or used coolant to improve the heat transfer in your cooling system. Water Wetter also reduces scale buildup in cylinder heads for better cooling and helps keep water pump seals lubricated for longer life. Water Wetter provides excellent corrosion protection for modern cast iron, aluminum, and brass cooling systems.

88-0191-2 12 oz Bottle 12.99 ea.



Mercedes-Benz® Anti-Corrosion Antifreeze

- A Must For Aluminum Radiators
- Anti-corrosion Formula For Mercedes Engine Parts

Mercedes® engines contain a number of aluminum parts. The use of aluminum components in these motors requires that you use an anti-corrosion antifreeze/coolant and not all of those offered on the market can provide this protection. We wanted to offer you the best, so we offer you the original. (50/50 Mixture is recommended.)

99-872 19.99 Gal.



40 Below Coolant Additive

- Stops Overheating
- Reduces Water Temperature

Pro-Blend guarantees instant results from this radiator additive. Add 30 Oz. per 2 gallons or- 60 Oz. per 4 gallons of water (or coolant). Product does not need to be applied every time the system is flushed, but 60 ounces are needed to reduce temperatures 40°. Perfect for racing, towing and daily drivers with air conditioning.

88-0206-1 24.99 ea.



Brake Fluid

- Replace Brake Fluid Every Year

Why should brake fluid be changed regularly? Brake fluid attracts moisture, which lowers the boiling point and can give you a mushy brake pedal, or no pedal at all, under extreme conditions. ATE Super Blue or Gold Racing brake fluids are DOT 4 rated and can be mixed with all brake fluid with the same specifications. ATE Racing Fluids were designed for coping with the extreme demands of motor racing. It is used in motor racing by leading car makers. Dry boiling point: 536 F. Wet boiling point 392. Alternate between Gold and Blue to make fluid changing easier. By changing colors you can tell when the old fluid has been completely flushed and both types have the exact same specs. 1 Liter Cans.

883471 17.99 ea.



BTU+ Total Treat Diesel Fuel Improver

- Better Low Temperature Starting
- Keeps Filters And Injectors Clean For Longer Life
- More Complete Combustion For Better BTU's
- 1 Pint Treats Up To 125 Gallons



803099 19.99 ea.



Diesel Winter Flow

During cold weather conditions, diesel fuel will turn thick. This causes the fuel not to flow and will inhibit cold starts. Lubro Moly Winter Flow protects against diesel fuel gel and is one of the only products recommended by Mercedes-Benz®. Treats 10-12 gallons.

804522 6.99 ea.

Transmission Fluid

- For 722.6 And Later Transmissions

27-300 18.99 lt.



Brake Fluid

- ATE Super Blue Racing
- 1 Liter

801154 19.99 ea.



Lubro Moly Jectron

Today's fuel-injected Porsche® provides you with smooth power, economic performance and easy maintenance. Using Lubro Moly Jectron once a month will keep your injection system deposit free and, used over time, will help reduce component wear.

801500 Jectron (Treats 20 gal.) 6.99 ea.



Lubro Moly Ventil Sauber (Valve Clean)

Ventil Sauber (valve clean) was developed to keep intake valves clean and deposit-free from carbon deposits. Used regularly, your Porsche® will start better, run smoother and maintain maximum fuel mileage.

801501 Ventil Sauber (Treats 20 gal.) 5.99 ea.

Motor Protect Engine Treatment

- Significant Wear Reduction
- More Performance
- Improve Fuel Mileage

Whether your Porsche® is new or old, your engine will benefit by using Lubro Moly Motor Protector. Extreme pressure, anti-wear additives form a very thin, compliant and anti-friction surface film on all frictional surfaces. It remains effective up to 30,000 miles.

861135 Motor Protectant 21.99 ea.



Lubro Moly Motor Clean

- Reduce Engine Wear
- More Performance

Extended oil change intervals, smaller oil sumps, inadequate fuel quality, lean burning engines. All this leads to the formation of the dreaded black sludge in modern engines. The highly effective detergents and dispersants dislodge the sludge and lacquers, and keep both solid and liquid contaminants in suspension, until they are drained with the old motor oil.

861136 Motor Clean 14.99 ea.



Assembly Lube

With extremely high moly content, LM 48 provides ideal conditions for running-in and bedding of moving engine parts. It is also great for assembling press fits, universal joints, spline shafts and gears, as well as most joints and linkages that are lubricated for life.

801504 7.99 ea.



Wheel Bearing/CV Joint Grease

LM 47 is a high quality grease of molybdenum disulfate, which gives it outstanding high pressure/high temperature lubricating capabilities. LM 47 is recommended for wheel bearings and other types of anti-friction bearings.

801513 4.99 ea.



Loctite Case Sealers

"Orange" Loctite 574

- Finest Compound Available
- Porsche® Engine Case Sealant

883142 Loctite 574 19.99 ea.



Ultra Disc Brake Caliper Lube

The floating calipers used in the 914, 924, 944 and 928 can benefit from proper lubrication on the caliper pins. This Permatex lube withstands temperatures to 400 degrees F, protects against moisture, and also helps quiet brake squeal. By Permatex.

801624 6.99 ea.

Anti-Seize Compound

Prevents hardware from seizing, galling and rusting. Withstands extreme temperatures for exhaust, turbos, spark plugs and brake parts. Prevents corrosion when used on two different metals and stops brake squealing when applied to back of brake pads. Great for lug bolts!

801514 14.99 ea.



Mass Air Flow Sensor Cleaner

The first product specifically developed to clean mass air flow sensors. Increase horsepower; improve air/fuel ratio and MPG, without damaging the plastic housing or hotwires in the MAF sensor. Unlike harsh chemicals like brake parts cleaners or carburetor cleaners, Mass Air Flow Sensor Cleaner is safe to use for all MAF sensors. Reduce rough idle, decrease hesitation and ping-ing for a smoother, more powerful engine. Ships UPS Ground only.

88-9992-2 7.99 ea.



Rubberized Undercoating

- Helps Prevent Rust
- Sprays On Easily, Dries Quickly

3M Rubberized Undercoating provides a tough film exceptionally resistant to abrasion. Since 3M Rubberized Undercoating remains flexible, it's ideal for coating small or repaired areas.

88-0278-2 13.99 ea.



Lubro Moly Diesel Hi Test

- 10 Oz. Can

Lubro Moly Diesel Hi-test is the most complete diesel additive on the market. Hi-test will boost the cetane rating, dissipate water, and leave your injectors deposit-free. Your diesel will start better, run smoother, get improved fuel mileage and reduce exhaust smoke. Treats up to 12 gallon.

801511 7.99 ea.

